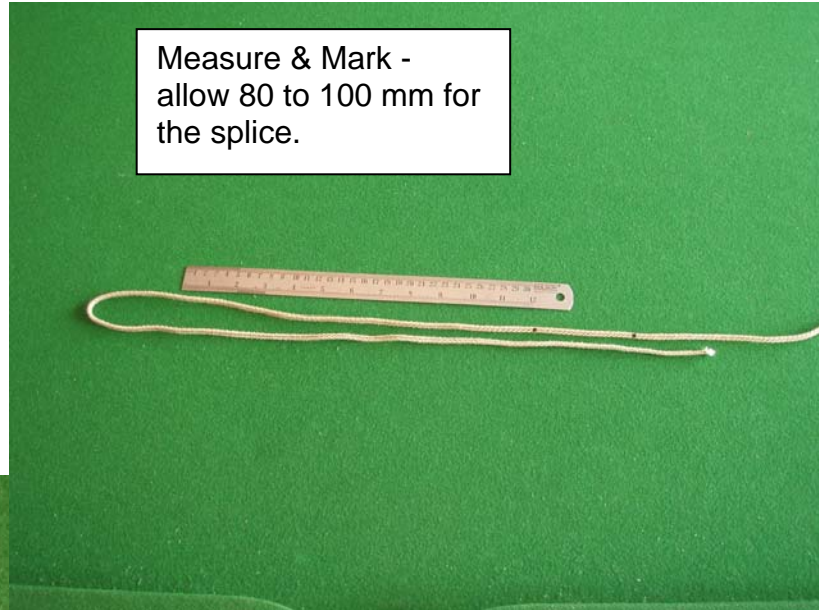


Hertzog Splice

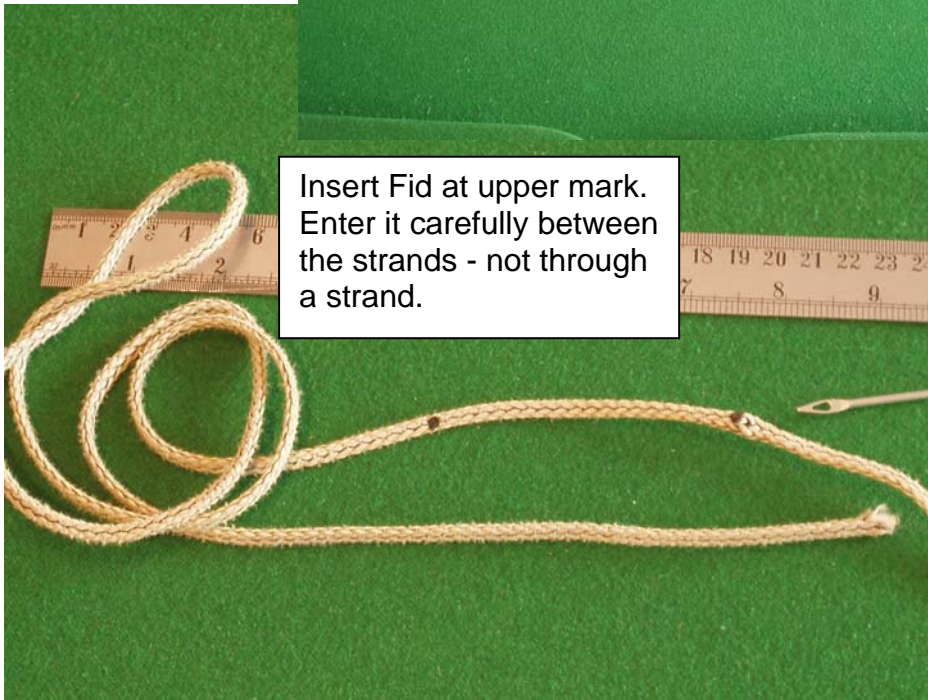
Running Splice for
(e.g.) trapeze
adjuster line.
Using 2.5 mm rope -
Hertzog/ Lightning/
or Holt Pro-Line.

Option 1 - Using Fid

Measure & Mark -
allow 80 to 100 mm for
the splice.



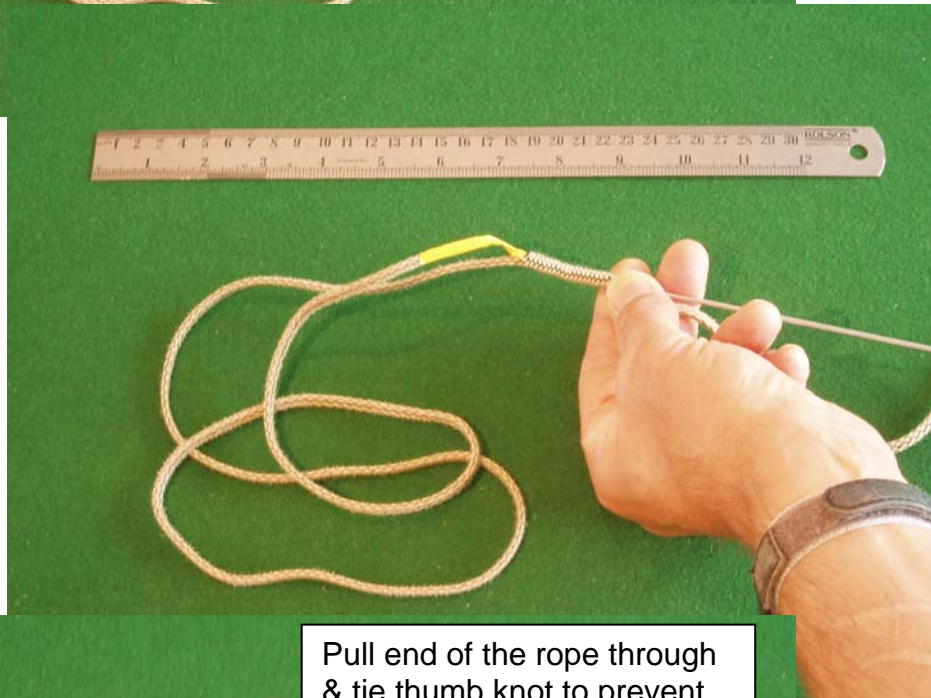
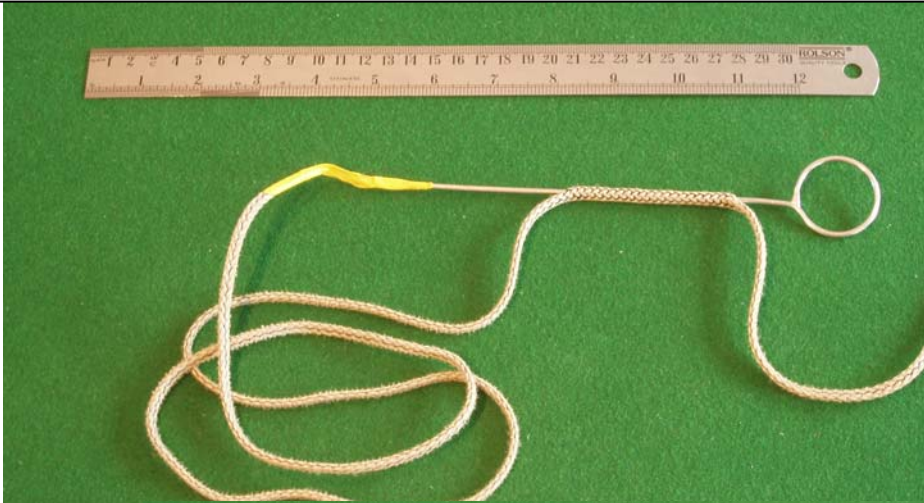
Insert Fid at upper mark.
Enter it carefully between
the strands - not through
a strand.



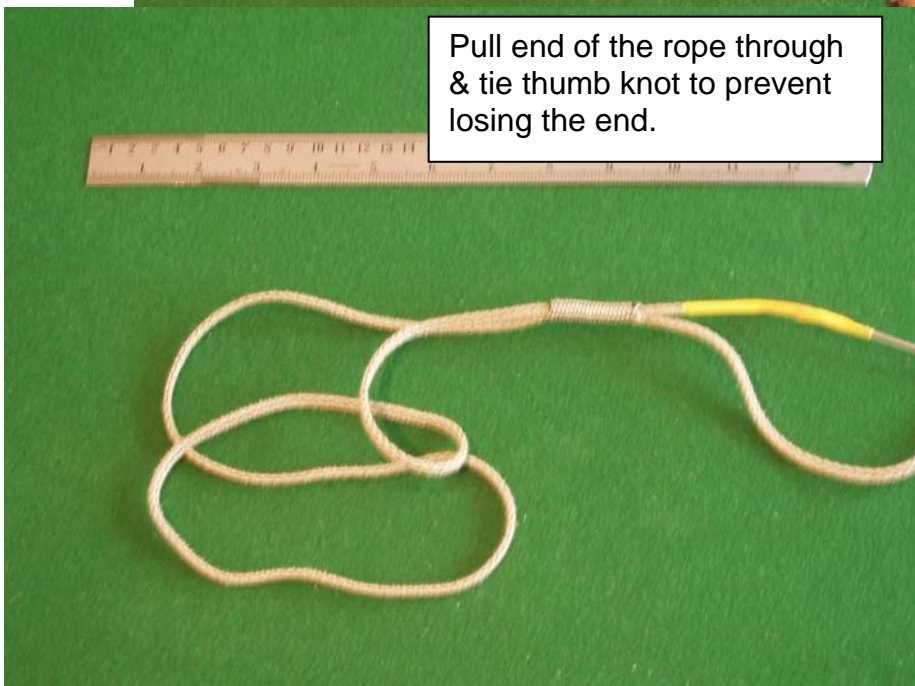
Pass fid through middle of
rope along length of splice
& out at the lower mark -
between strands again.



Attach end of rope to Fid - I find it easier to use tape than try to fit it into the eye of the Fid. Leave a gap between the end of the fid and the end of the rope to make it easier to pull through the rope.



Pull end of the rope through & tie thumb knot to prevent losing the end.





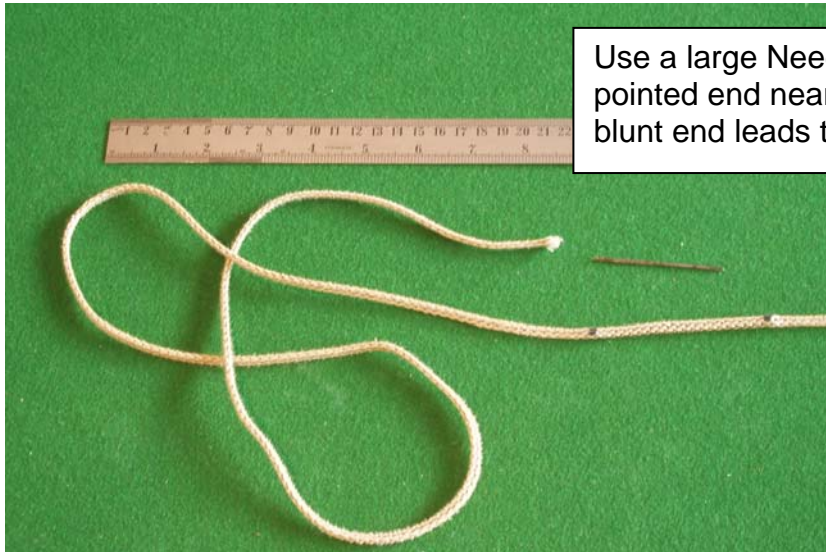
Adjust by holding splice & pulling rope end.



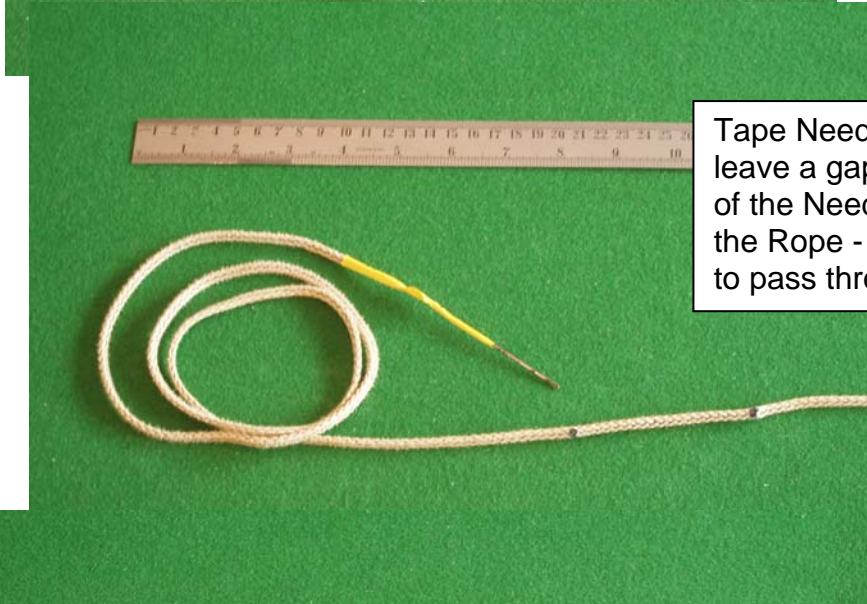
Splice binds-up tight as soon as load is applied.

Note: to convert to fixed splice stitch along the splice to prevent it coming loose.

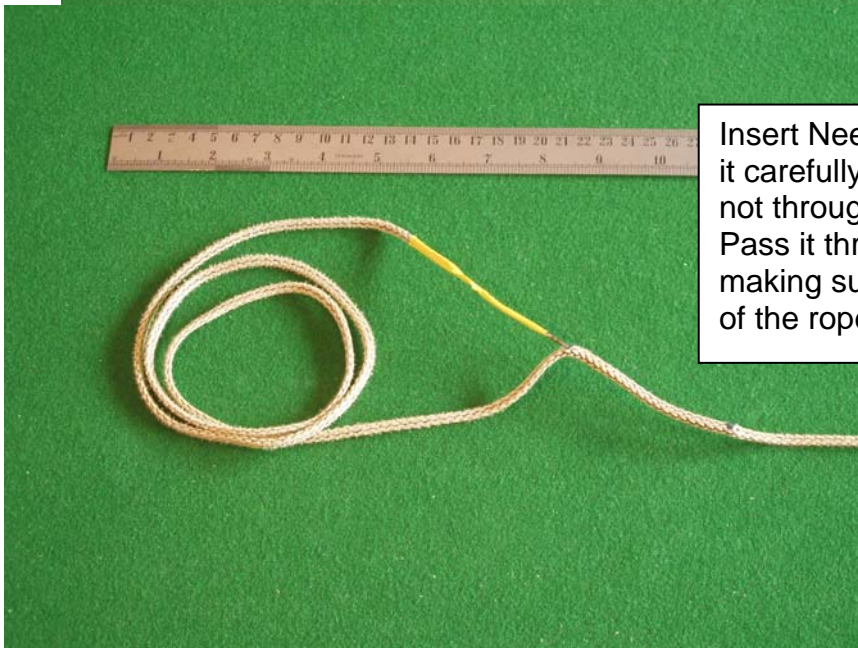
Option 2 - Use a Needle



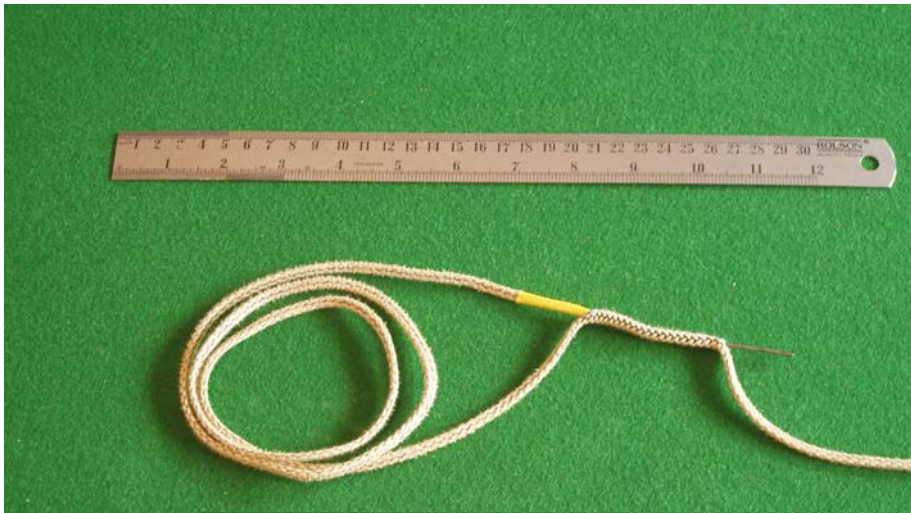
Use a large Needle (or similar) - pointed end nearest rope so that blunt end leads through the rope.



Tape Needle to end of rope - leave a gap between the end of the Needle and the end of the Rope - or it can be difficult to pass through the rope.



Insert Needle at lower mark. Enter it carefully between the strands - not through a strand. Pass it through the rope carefully - making sure it stays in the middle of the rope.



Pass Needle through middle of rope along length of splice & out at the upper mark - between strands again.



Richard Stenhouse

The finished Hertzog Running Splice looks cool - works well - and never fails to impress 😊

Ian Renilson
Musto Skiff GBR 128
IanR@Sunrise-Engineering.com
September 2006